



# YoloTD Board of Directors Meeting

September 9, 2024



Agenda Item 1: **Determination of Quorum**

Agenda Item 2: **Approve Agenda**

Agenda Item 3: **General Public Comment**



# Agenda Item 4

## Consent Calendar

4a	Approve Board Minutes for Regular Meeting of July 8, 2024
4b	Approve Resolution 2024-17 Reauthorizing Staff to Approve Fund Transfers and Transactions at Yolo County
4c	Approve Resolution 2024-18 Authorizing the Executive Director to Approve a Service Agreement and Purchase Order for Temporary Information Technology Support Services
4d	Approve Resolution 2024-19 Approving an Update the Personnel Rules & Regulations policy, Purchasing Card Policy, Procurement Policy, and the Travel & Expense Reimbursement Policy
4e	Approve Resolution 2024-20 Authorizing Staff to Change the Title and Job Description of the Finance Associate Classification



# Agenda Item 5

Appoint Frank Reyes as At-Large Member of the  
Citizens Advisory Committee



# Agenda Item 6

Actions Pertaining to Yolo County Grand Jury  
Report on Homelessness in Yolo County

# Staff Recommendation

1. Receive the Yolo County Civil Grand Jury Investigative Report findings;
2. Authorize the Executive Director to submit the required response to the Grand Jury;
3. Direct staff to evaluate options for improving transportation to the East Beamer Campus.

# Grand Jury Finding

“The Fourth and Hope property is difficult for its intended clientele to access by bus. The closest bus stop is approximately 1.5 miles away at the intersection of East Main Street and Yolo Polo Plaza. The transportation vans at Fourth and Hope, which initially were donated to alleviate the transportation issues, run irregularly or not at all due to a variety of factors.”

# Grand Jury Recommendation

“The City of Woodland and the Yolo County Transportation District should renew efforts to establish bus service in the northwest industrial area of Woodland. The request for a bus stop should be included in the next SACOG Unmet Transportation Needs report submission.”



# Obligation to Respond

Yolo Transportation District is required to bring the Grand Jury Findings to the Board of Directors, and to send a respond to the Grand Jury within 90 days.

# Fourth & Hope's East Beamer Campus



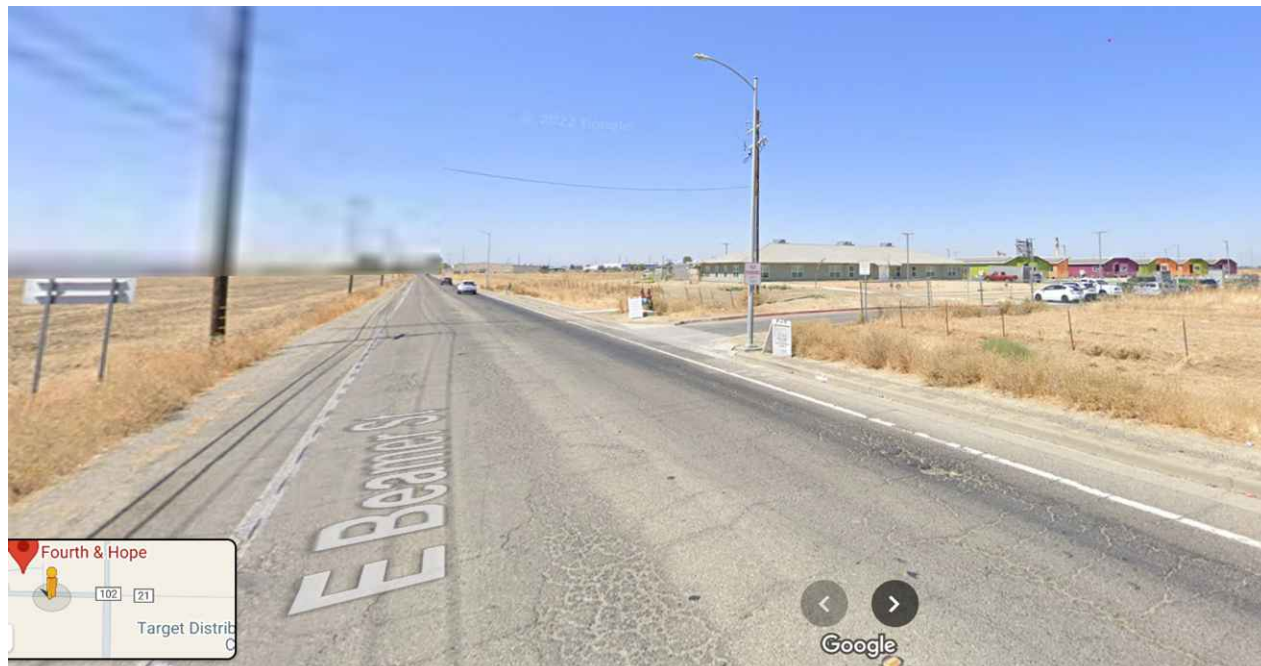
- Overnight shelter
- Permanent supportive housing units
- Community center
- Residential addiction treatment program
- Residents: 161 -> 221

# East Beamer Campus Location



- NE Woodland (Road 102 @ Beamer Way)
- 1.3 miles to nearest bus stop
- Outside BeeLine service area

# Street View



- No sidewalks, narrow shoulder
- Not accessible by 40' bus

# Discussion

- Fourth & Hope currently provides three round trips daily to the nearest Yolobus stop.
- YoloTD has received many requests for direct service to/from East Beamer campus.
- The Yolo County Transportation District does NOT need approval from SACOG to provide transit service to Fourth and Hope.
- If SACOG determines that there are unmet transit needs at Fourth and Hope that are reasonable to meet, it can withhold Local Transportation Fund (LTF) dollars from Yolo County jurisdictions until those unmet transit needs have been fulfilled.

# Proposed Response

Work with Fourth & Hope and Woodland to evaluate improved transportation options:

1. Fixed-route service using smaller minibuses or vans;
2. Expand BeeLine service area to include NE Woodland;
3. Expand the privately-operated van program.

Present analysis to YoloTD Board by April 2025.

# Staff Recommendation

1. Receive the Yolo County Civil Grand Jury Investigative Report findings;
2. Authorize the Executive Director to submit the required response to the Grand Jury;
3. Direct staff to evaluate options for improving transportation to the East Beamer Campus.



# Agenda Item 7

Receive Progress Report on BeeLine Service



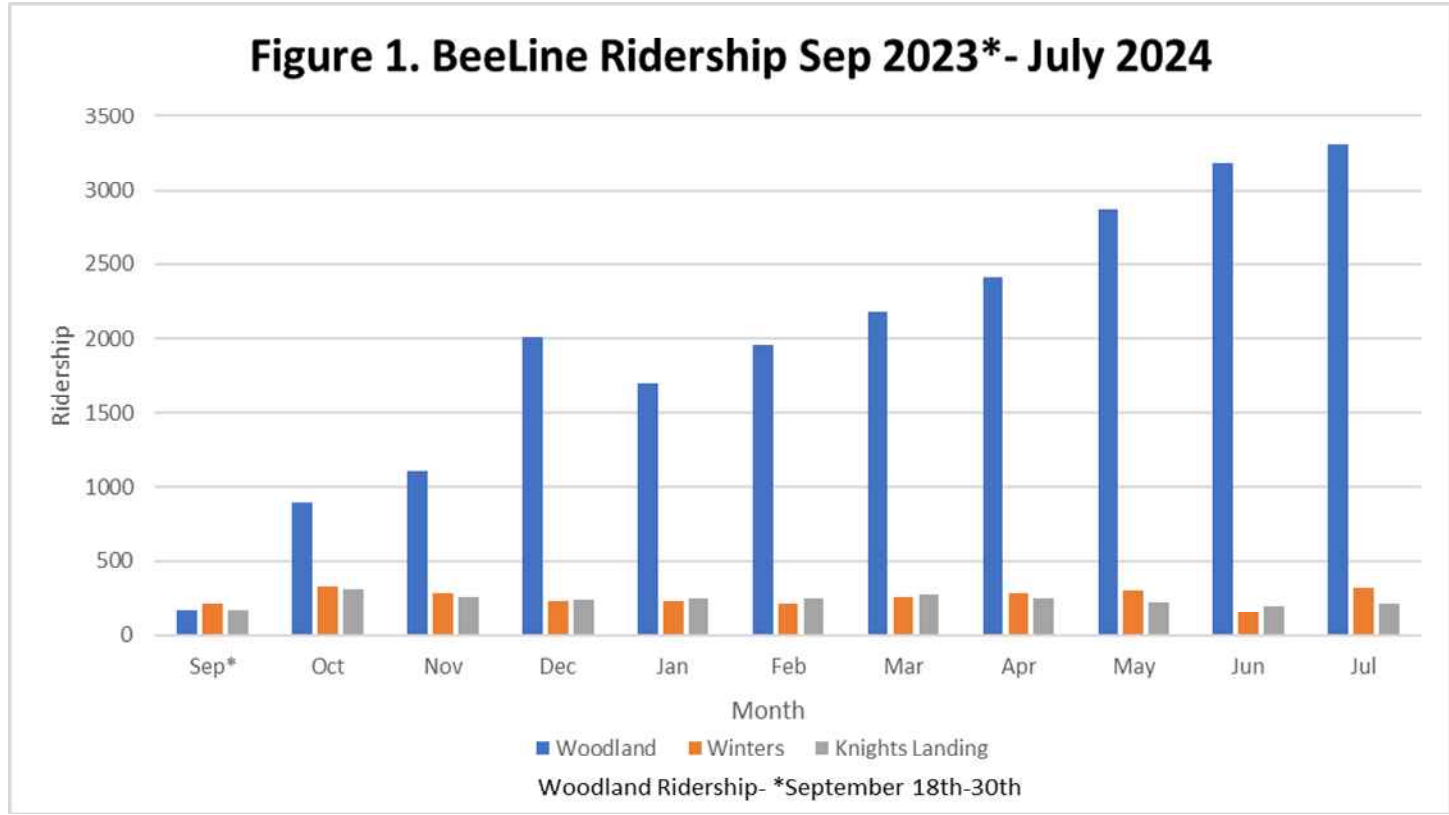
# Table of Contents

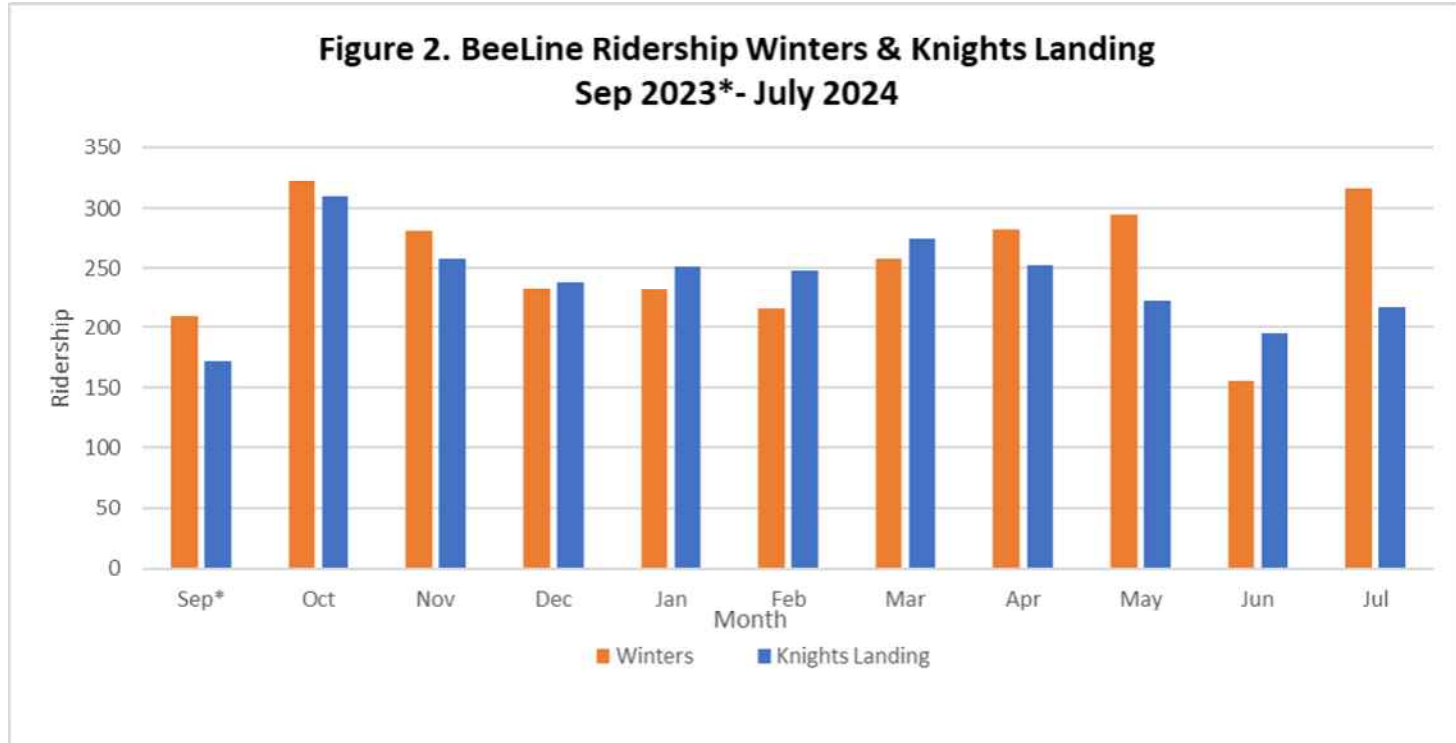
- Ridership Trends
- Top Destinations
- Relationship Between BeeLine and Fixed-Route Services
- Customer Satisfaction, Experience and Testimonials
- Challenges
- CAC Feedback
- Next Steps

## Ridership Trends

During these past eleven (11) months of operations, BeeLine has served a combined 27,252 rides across all three service zones.

In the month of July, Woodland saw its highest usage for BeeLine at a combined 3,317 riders.





# Top BeeLine Destinations

## Woodland

- County Fair Mall
- Woodland Community College
- Costco Shopping Center

## Winters

- El Rio Villa/Yolo Housing
- Lorenzo Market
- Rotary Park
- Safeway/Marketplace (Davis)

## Knights Landing/Yolo

- Landing Grocery Store
- Wayside Market
- Woodland Community College (Woodland)
- Yolo County Superior Court (Woodland)

## BeeLine vs Fixed-Route Buses in Woodland

- Ridership on local Woodland buses (routes 211 and 212) remains strong
  - *Local bus ridership 30% higher than BeeLine ridership (Sept 2023-July 2024)*
- Restoration of early/late trips led to ~ 25% increase in bus ridership in spring 2024, likely due to school trips
- In June/July, bus ridership dropped, while BeeLine continued to grow.
- Many Woodland riders use BeeLine to access other YoloBus services.
- **OVERALL: Data suggests that BeeLine is attracting new transit riders, not replacing fixed-route bus trips.**

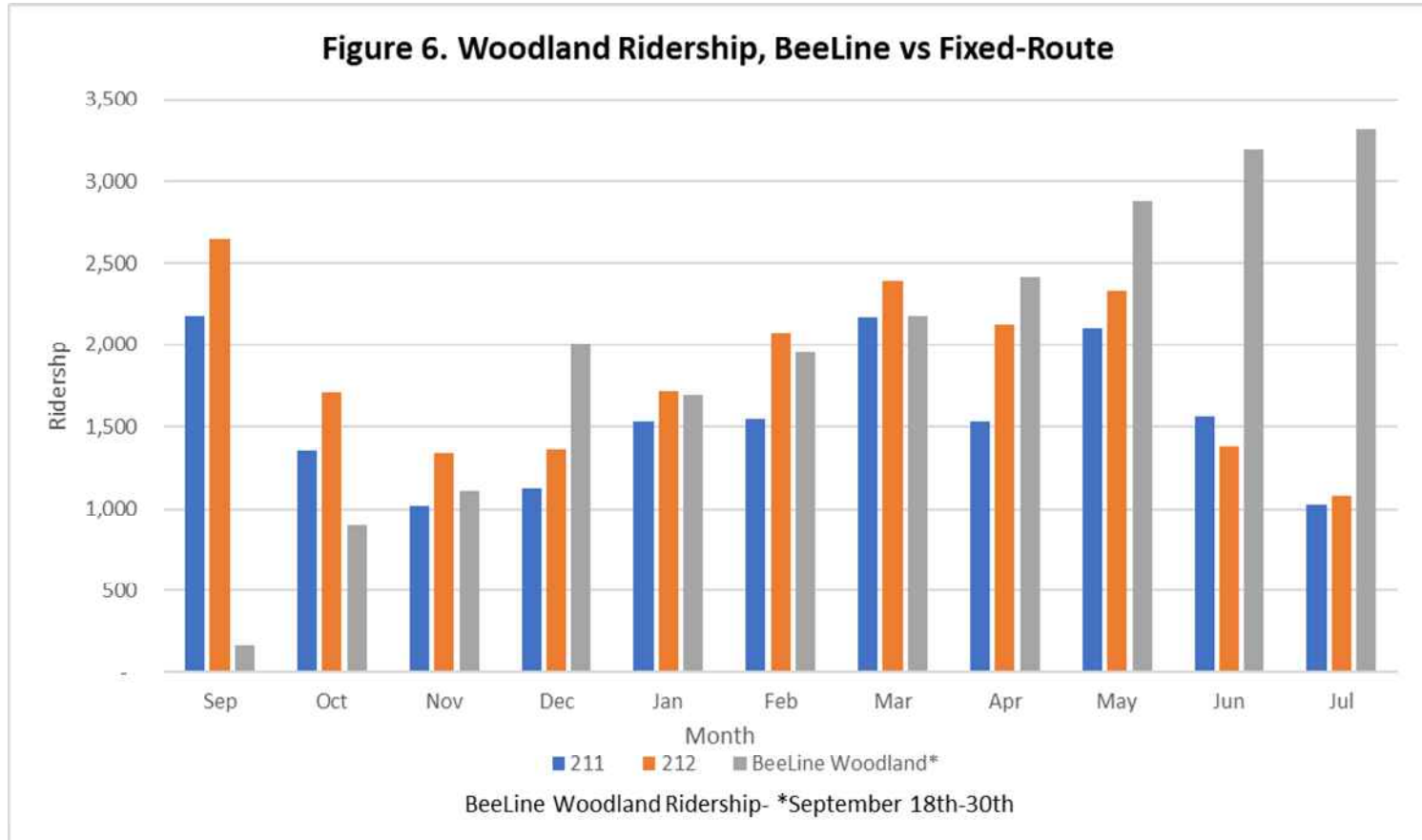
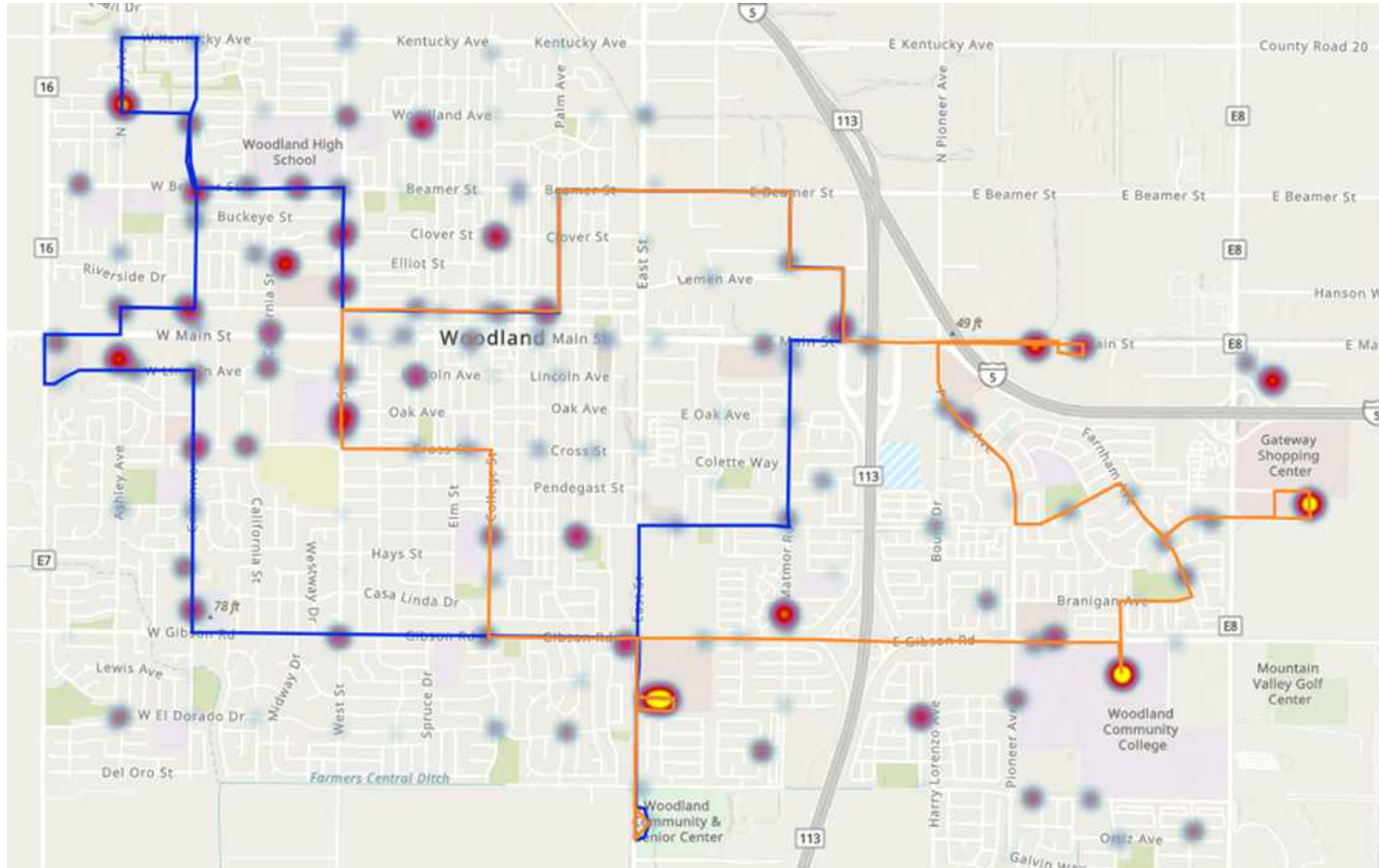


Figure 7. Woodland Service Heatmap with BeeLine top locations vs Yolobus Woodland Routes





# Customer Satisfaction, Experience and Testimonials

As of July of 2024, we are happy to report that we have achieved an average **4.6** rating across all three service areas.

- Woodland: **4.6**
- Winters: **4.4**
- Knights Landing: **4.7**

# Challenges

Since the launch of the BeeLine service it has faced its share of problems. Including:

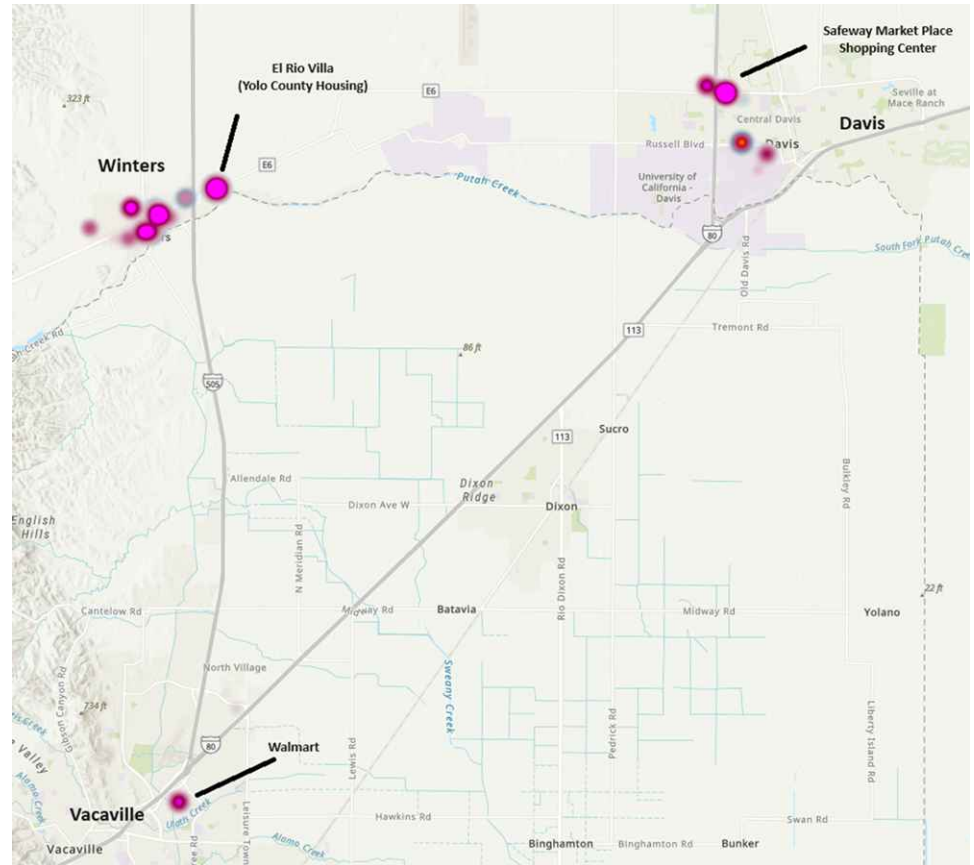
- Late pickups and missed trips due to high demand (esp Winters)
- Riders having difficulty downloading and using the RideCo app
- Confusion between Beeline and Paratransit.
- Transdev staff not using the RideCo app properly

YoloTD board members requested that we investigate the impacts regarding delays for the Winters service area.

There are two main issues:

1. Insufficient vehicles and hours of operation relative to demand
2. Software not being designed for use in rural areas.

Figure 8. Winters BeeLine Service Map (September 18th – June)



## Feedback from Citizens Advisory Committee

- Feedback from our CAC members on the BeeLine service was generally positive.
- Consider restoration of Route 220, which served Davis -> Winters -> Vacaville before COVID.
- Solano Community College may be an untapped market for Winters BeeLine.

## Next Steps

- On July 8, 2024, YoloTD Board approved the FY 2024-25 Budget which allows for future expansion of BeeLine service in the Winters and Knights Landing/Yolo areas.
- YoloTD staff will develop a specific service change proposal based on data and public/rider input.



# Agenda Item 8

## Administrative Reports

- A. Board Member Reports
- B. Transdev Report
- C. Executive Director Report
- D. Long Range Calendar

# Long Range Calendar

## October 2024

- Discuss Goals and Format for Special Workshop(s) on YoloTD Budget and Funding Sources
- Update on Internal Controls
- Update on Yolo Active Transportation Corridors (YATC) Project
- Public Hearing and Possible Action on Restoration of Route 44 and Schedule Changes to Routes 43 and 230 (Davis Express Routes)

## November 2024

- Public Hearing & Possible Action on BeeLine Service Changes in Winters
- Woodland Transit Center: Authorize Contract Amendment with Kimley Horn for 100% Design of Court Street Location
- Caltrans Letter of Commitment to the Capitol Area Regional Tolling Authority

# Agenda Item 9

**Adjourn Meeting**